

S-5!®

The Right Way!™

S-5-MX Mini

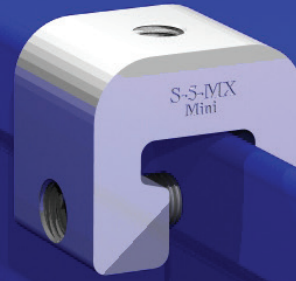
The S-5-MX is a single part that fits on both single-folded and double-folded profiles. The clamp installs on the Knudson KR18, NewTech TRQ250, and the Zimmerman TSS2500 without puncturing the seam material and without violating manufacturer warranty.

Simplify your clamp selection with the S-5-MX Mini clamp.

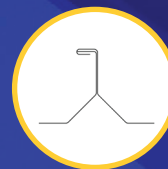
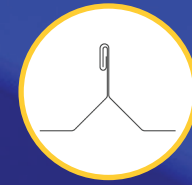
The simple but powerful design of the S-5-MX allows an assortment of ancillary items to be attached: Fix solar panels, lifelines, walkways, combiner boxes, conduits, cable trays, and other PV Balance of System (BOS) components.

Developed with price and ease of installation in mind, the MX Mini is the perfect attachment solution for mounting the PVKIT™ 2.0.

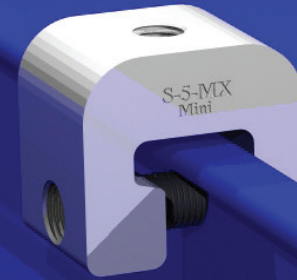
NEW



Double-Fold



Single-Fold



S-5-MX Mini

FEATURES AND BENEFITS

- All non-corrosive materials
- Securely fasten solar panels, lifelines, walkways, wiring and BOS components
- Cost-effective way to mount PV
- No need to decide between S-5-U, S-5-V, H90, or S-5-H
- Fits single and double-folded seam profiles:
 - Knudson KR18
 - NewTech TRQ250
 - Zimmerman TSS250

The right way to attach almost anything to metal roofs!



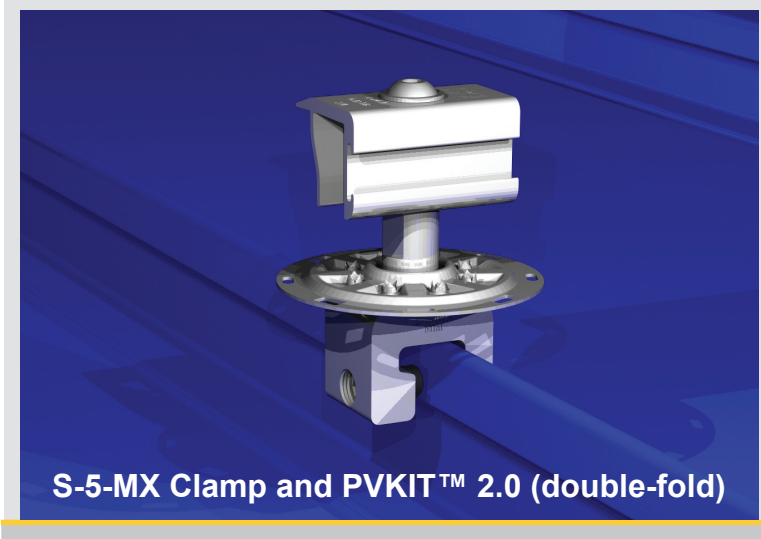
888-825-3432 | www.S-5.com



The S-5-MX Mini offers the most secure and cost-effective way to mount solar panels when utilizing the PVKIT™ 2.0.

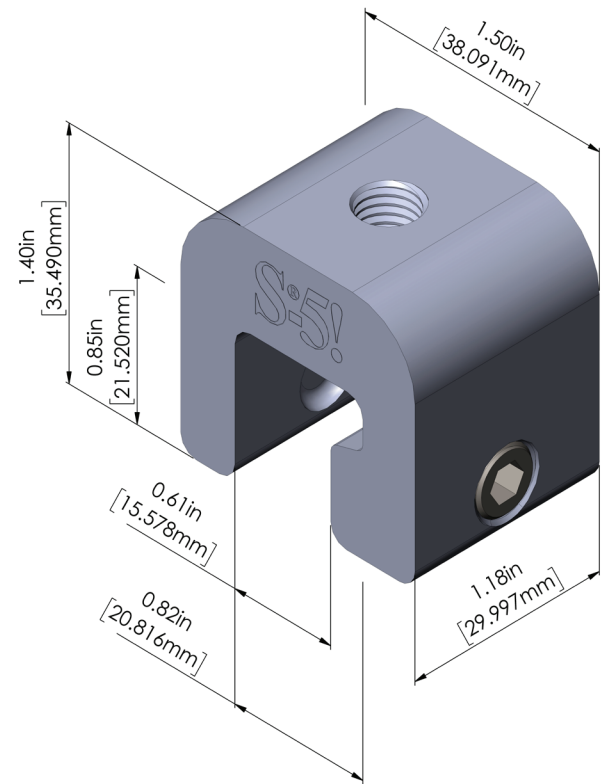


S-5-MX Clamp and PVKIT™ 2.0 (single-fold)



S-5-MX Clamp and PVKIT™ 2.0 (double-fold)

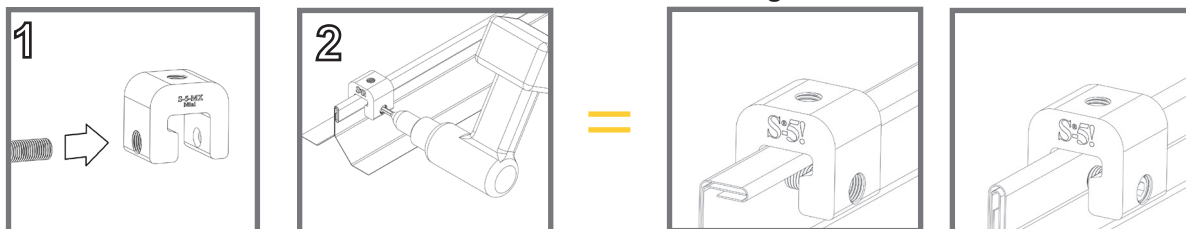
S-5-MX Mini



For design assistance, ask your distributor, or visit www.S-5.com for the independent lab test data that can be used for load-critical designs and applications. Also, please visit our website for more information including metallurgical compatibilities and specifications.

Ease of Installation...in just 1...2...

Installation Simplified: The S-5-MX Mini can be installed on both single-fold and double-fold seam profiles. Simply insert the single setscrew and place clamp onto seam. Then apply appropriate amount of torque as per installation instructions. The clamp is now ready for a variety of rooftop accessories.



S-5!® Warning! Please use this product responsibly!

Products are protected by multiple U.S. and foreign patents. Visit the website at www.S-5.com for complete information on patents and trademarks. For maximum holding strength, setscrews should be tensioned and re-tensioned as the seam material compresses. Clamp setscrew tension should be verified using a calibrated torque wrench between 160 and 180 inch pounds when used on 22ga steel, and between 130 and 150 inch pounds for all other metals and thinner gauges of steel. Consult the S-5! website at www.S-5.com for published data regarding holding strength.

Copyright 2019, Metal Roof Innovations, Ltd. S-5! products are patent protected. S-5! aggressively protects its patents, trademarks, and copyrights. Version 040119.

Distributed by